



Stuart Countess
Kia Georgia



Current Products



EV9 at a glance

About

- Combines the best SUV elements of the Telluride with the best electric vehicle elements of the EV6.
- First three row EV for Kia
- Connects capability with technology and refined elegance
- Will be assembled in West Point, Georgia

Capability

- Up to 7.8 inches of ground clearance with 5,000 lbs. towing capacity
- 379 horsepower
- 516 feet of torque
- Can go 0-60 mph in 5 seconds
- Targeted electric range of 300 miles
- Equipped with more than 20 collision avoidance technologies



All-New 2024 Kia EV9



Scorecard Sample

| YYYY Month YTD | | Key Performance Indicators (KPIs) | | | | | | | | | | |
|----------------------|---|-----------------------------------|-------------|--------------|--------------|--------|------------|----------------|----------------|--------------|----------|----------|
| | | Attendance (%) | Quality (%) | | | | Safety (%) | | Efficiency (%) | | Cost (%) | |
| Grade / % | | Attendace (%) | GA FTTQ (%) | VPC FTTQ (%) | DC Score (%) | 3M (%) | LTI (%) | OSHA Rec'd (%) | HPV (%) | GA Eff'y (%) | OS&D (%) | NPOT (%) |
| S | % | | | | | | | ● | | | | |
| A | % | | ● | ● | | | ● | | ● | ● | | |
| B | % | ● | | | ● | | | | | | ● | ● |
| C | % | | | | | ● | | | | | | |
| D | % | | | | | | | | | | | |
| Overall Grade | | B | B | | | | A | | A | | B | |

Total Score:
B

*Information/data is for illustration purposes only



STEM

STEM 1.0

Science

Technology

Engineering

Mathematics



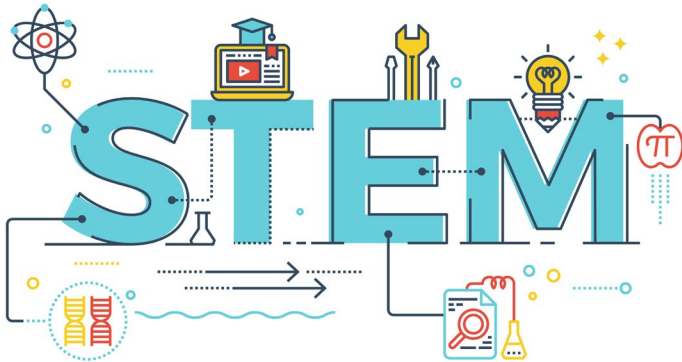
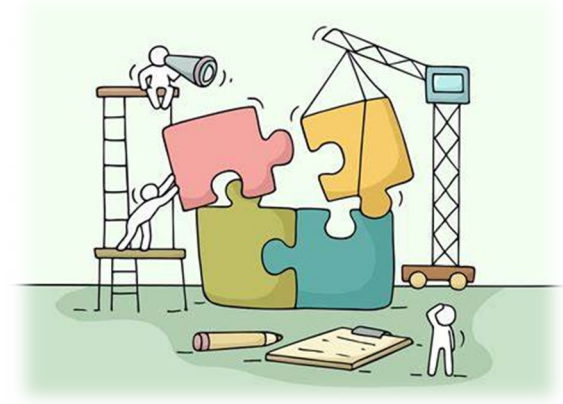
STEM 2.0

SOFT SKILLS

TECHNICAL SKILLS

ENGAGEMENT

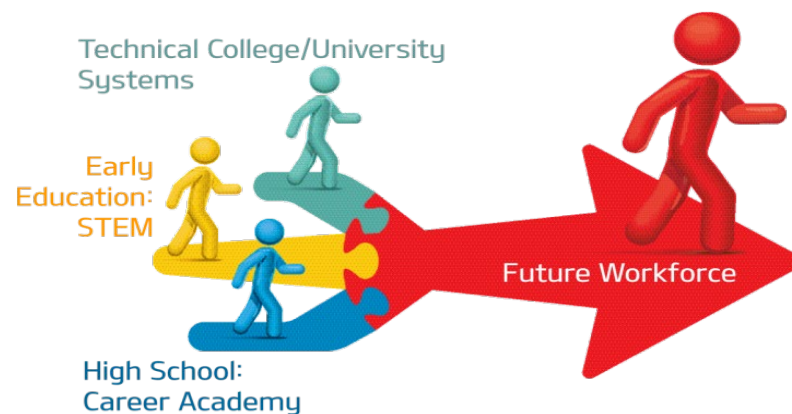
MOTIVATION



THINC Academy

THINC College and Career Academy

- Kia Georgia was a founding partner (the school opened in 2015)
- To date, Kia Georgia has provided more than \$3.6 million in funding.
- There are a variety of career pathways available such as: Mechatronics, Engineering, Marketing, Business and Healthcare
- Kia and THINC collaborate on Work Based Learning opportunities for students in their fields of study.



A World In Motion

SAE Foundation - A World In Motion

- To date, Kia Georgia has contributed more than \$3.6 million to local kindergarten through 8th grade classrooms to implement this AWIM curriculum through the SAE Foundation.
- In the decade since this program began, more than 90,000 students have participated through Troup County, Harris County, Meriwether County, Chambers County and Lanett City.
- Annual Jet Toy Challenge for fifth graders has become a tradition.



Greenpower USA

Greenpower USA

- Kia Georgia is a key partner for the GreenPower USA programs in Troup County and Chambers County.
- Kia Georgia has funded the annual Goblin Rally for elementary students for the past three years.
- Greenpower USA provides great exposure to electric vehicles and is a fantastic entry point to the skills needed for tomorrow's workforce.





Movement that inspires